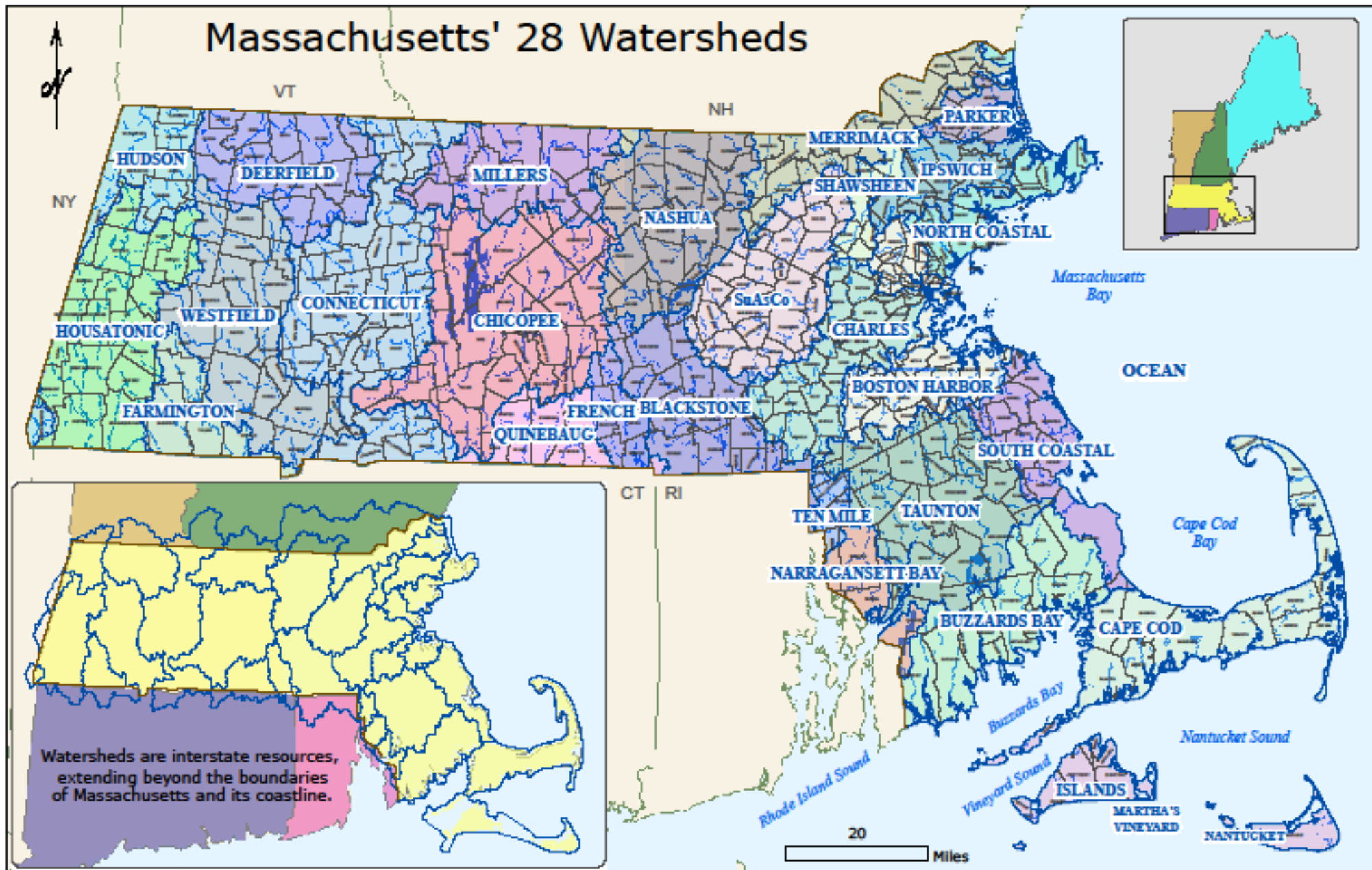


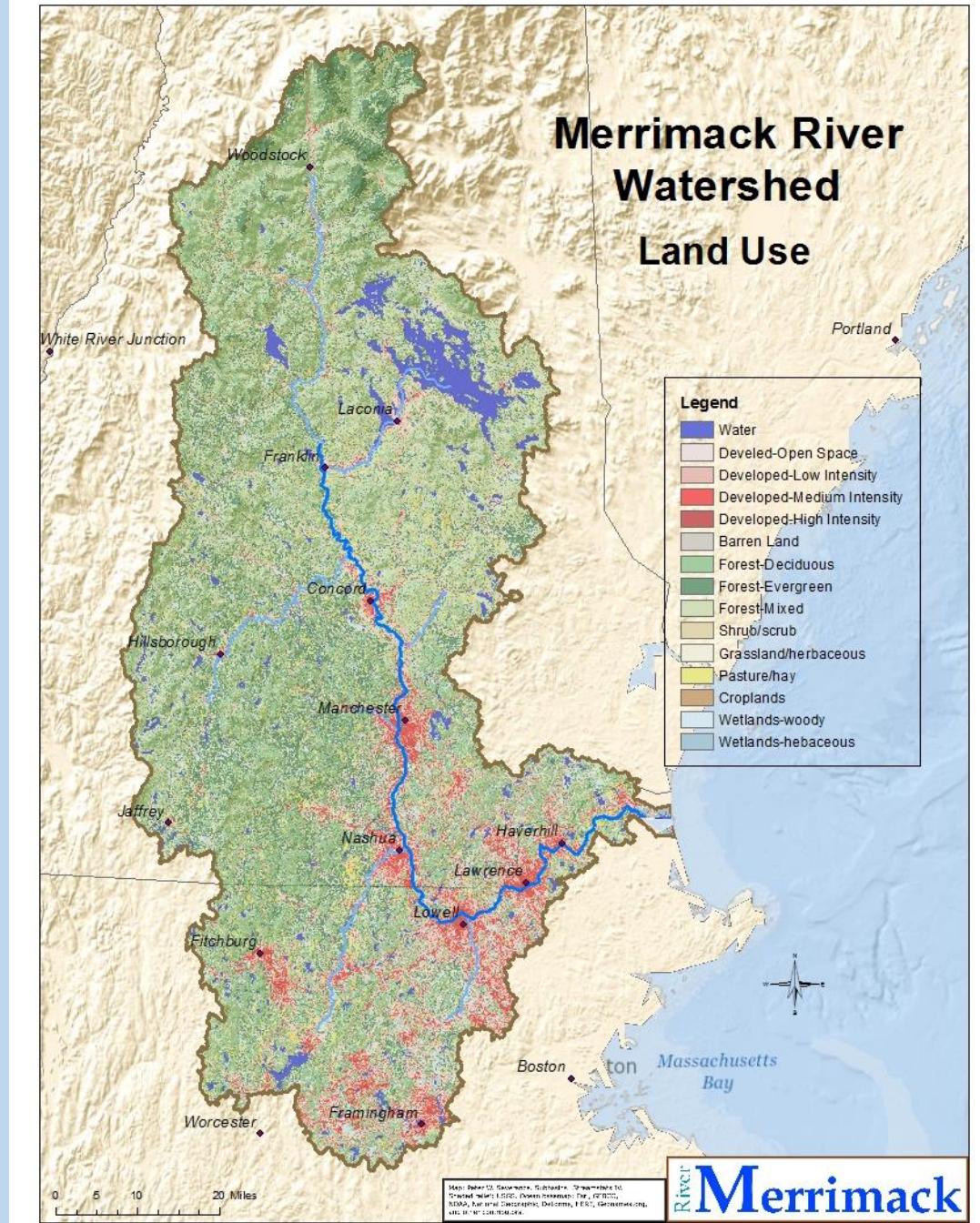
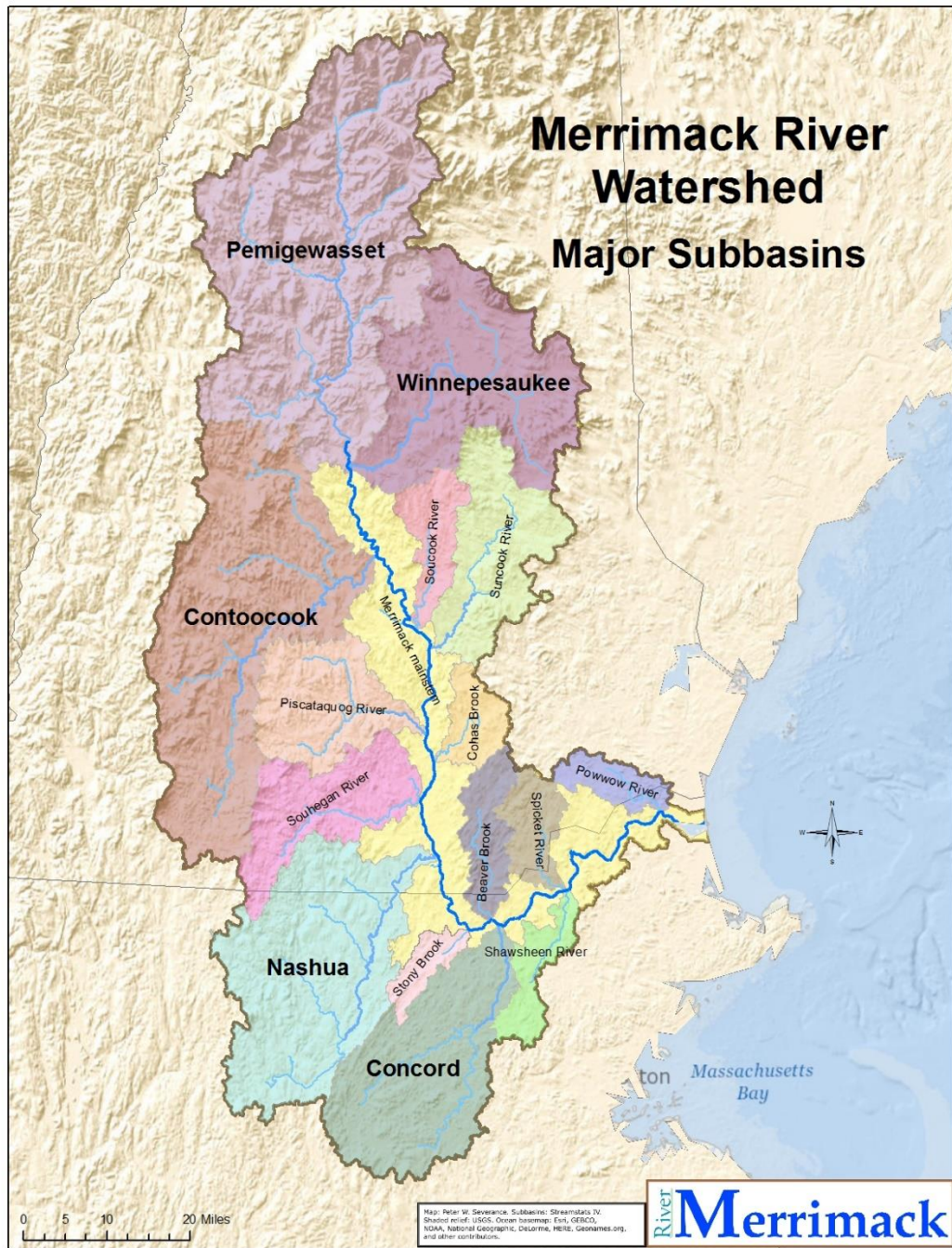
An Introduction to the Shawsheen River, Andover Dam Removals, and Andover Herring Count

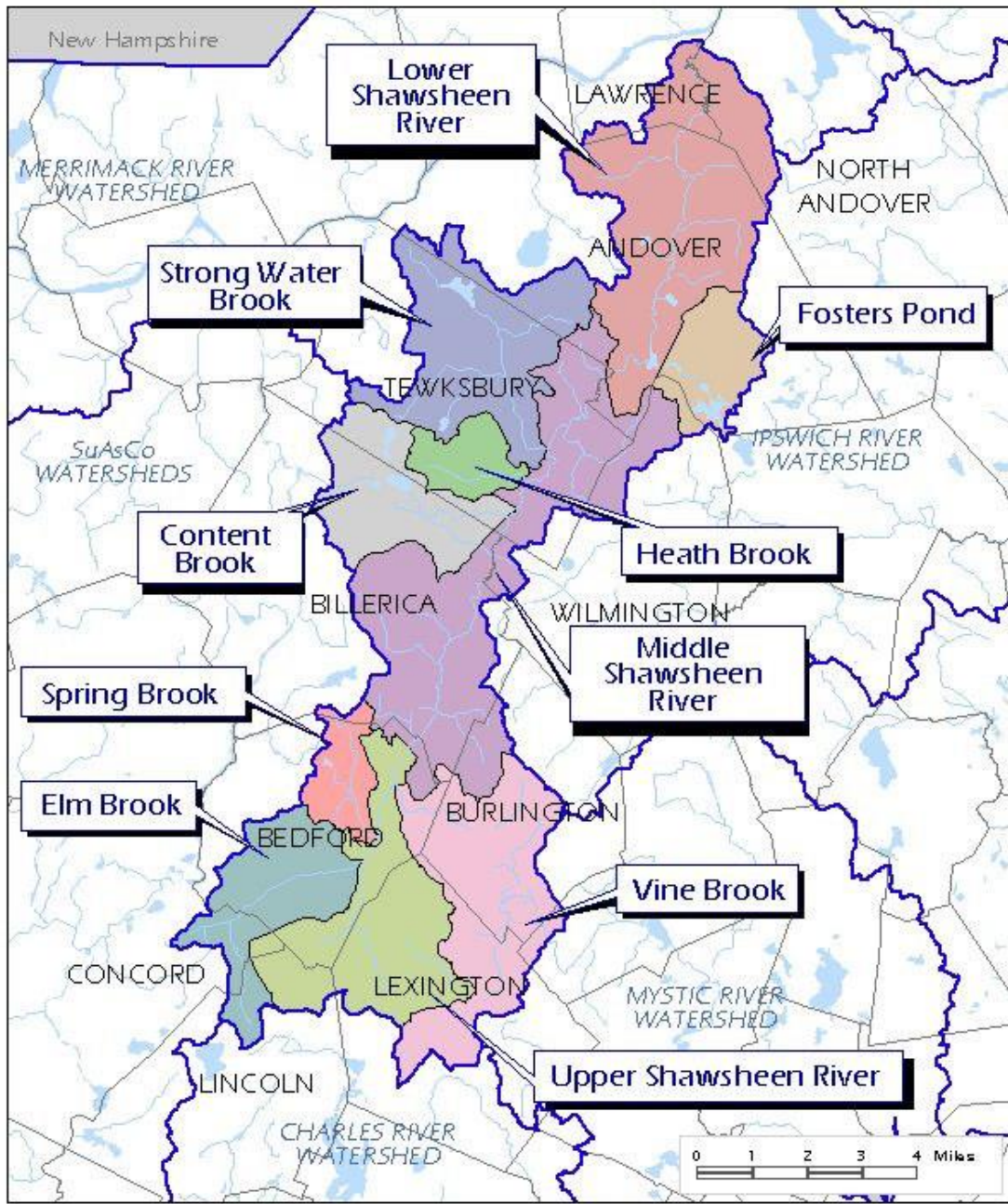
Ben Meade, Bob Douglas, Jon Honea - Town of Andover Conservation
Department/Conservation Commission/Emerson College



Massachusetts' 28 Watersheds







Watershed area of 78 square miles.

Encompasses parts of Towns of Andover, Bedford, Billerica, Burlington, Concord, Lawrence, Lexington, Lincoln, North Andover, Tewksbury, Wilmington, and Woburn.

Parts of the watershed are urbanized and heavily populated – mix of residential, commercial, and industrial land uses.

Main stem flows 25 miles – headwaters in Bedford to its confluence with the Merrimack River in Lawrence.

Flashy flows (notable flood events in recent past, along with low summer/early fall flows) are relatively common.



Great Stone Dam - first upstream obstruction to migratory fish on the Merrimack River (fish passage does exist)

Confluence of Shawsheen River/Merrimack River

Shawsheen River



Balmoral Dam (removed)

Marland Place Dam (removed)

Ballardvale Dam (still in place – last remaining dam on river)







Shawsheen River Views

